

Electrodynamics Shaker

The facility is part of fatigue lab. This equipment is intended to perform durability tests for Research and Development purposes.



Medium Climatic Chamber for Integration with ED Shaker

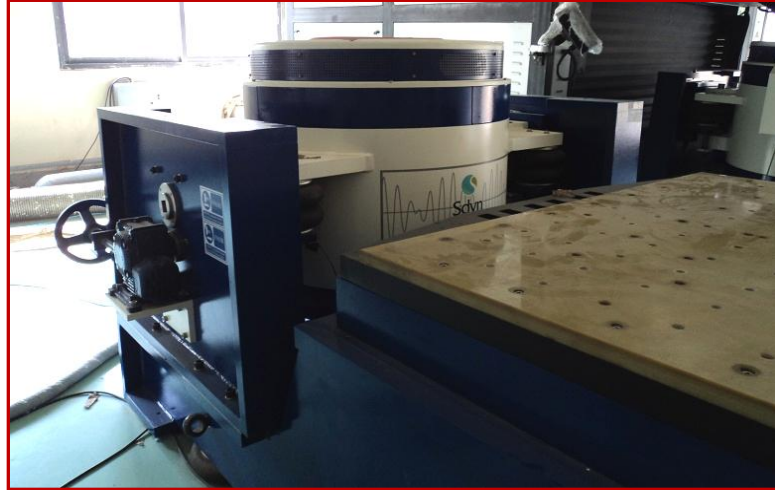


Large Climatic Chamber for Integration with Large ED Shaker

1. Function of Facility: The system is able to shake vertically and horizontally.

The following tests can be performed

- Sine sweep
- Resonance Search & Dwell
- Random
- Mechanical Shock (half sine, +ive/-ive)
- Manual Mode waveform generator in shock (Waveform editor)
- Discrete
- Cyclic Vibration(Customized)



3.2 Ton Large ED Shaker

2. Technical Specification of facility:

<u>Specification</u>	<u>Large ED Shaker</u>	<u>Medium ED Shaker</u>
Rated Force		3000kgf
Max Frequency	2000Hz	2000Hz
Displacement (pk-pk)	50mm	51mm
Max Velocity	1.7m/s	2m/s
Max Acceleration	90g	90g
Payload Capacity	450Kg	500Kg
Armature Dia	440mm	360mm
Mounting Base Dim	1.2m×1.2m	0.8m×0.8m
<u>Specification</u>	<u>Large Climatic Chamber for Durability and NVH</u>	<u>Medium Climatic Chamber</u>
Usable size	2.5m×2.5m×2.0m	1.5m×1.5m×1.5m
Temperature Range	-30°C to + 60°C	-60°C to + 180°C
Temperature Rate	4K/min	4K/min
Humidity	10% to 95% RH	10% to 95% RH